



WST

WS Technologies Inc.

Innovation and Quality

FBM200

Beacon Monitor

Automatically receives, decodes, logs, and maps all Cospas Sarsat 406 MHz beacon transmissions from a wide surrounding area.

Features:

- -125 dBm receiver sensitivity!
- receives all past, present, and future Cospas-Sarsat channels
- real-time 406 beacon monitoring
- very compact unit (4.1" x 2.5" x 1")
- aluminum construction – very rugged
- sits on desk or mounts on wall
- adjustable receiver sensitivity level
- DC power supplied via USB port on PC, or AC adapter
- data logging capability - organizes and timestamps the data
- XML formatted data – very useful for database applications
- decodes GNSS location and displays distance to beacon (with GPS option)
- measures and displays RSSI (receiver signal strength)
- measures and displays frequency
- live beacon activation notification via LED and/or audio alerts
- send alerts via e-mail and/or SMS text messaging
- alarm relay contacts allow use of external lights, buzzers etc.
- connect to PC via USB or optional Ethernet interface
- optional Ethernet connectivity allows for remote management and remote diagnostics, and ability to network numerous units for broader coverage
- optional outdoor high performance antenna



Two models to choose from:

- | | |
|----------|--|
| FBM200-A | basic model |
| FBM200-B | adds Ethernet interface and GPS receive capabilities |

Applications include port monitoring, airfield monitoring, park monitoring, beacon facility monitoring, remote confirmation that a beacon is transmitting adequate strength (during self-test)



	Index	Time Stamp	15 Hex ID	Country	Frequency	S/N Ratio (dB)	Comments
	1	May 02, 2008 5:25:26 PM	A78D014ED540401	Canada	406037071.9	46.2	
	2	May 02, 2008 5:26:14 PM	A78D014ED540401	Canada	406037071.8	45.4	
	3	May 02, 2008 5:27:03 PM	A78D014ED540401	Canada	406037071.9	43.7	
	4	May 02, 2008 5:27:53 PM	A78D014ED540401	Canada	406037071.9	51.2	*acknowledged the distress signal K.H.
	5	May 02, 2008 5:28:44 PM	A78D014ED540401	Canada	406037071.9	46.4	
	6	May 02, 2008 5:29:36 PM	A78D014ED540401	Canada	406037071.9	41.7	
	7	May 02, 2008 5:30:28 PM	A78D014ED540401	Canada	406037072.0	44.4	
	8	May 02, 2008 5:31:19 PM	A78D014ED540401	Canada	406037072.0	55.6	*notified Coast Guard of the distress
	9	May 02, 2008 5:32:11 PM	A78D014ED540401	Canada	406037072.0	55.2	
	10	May 02, 2008 5:33:01 PM	A78D014ED540401	Canada	406037071.9	49.9	
*	11	May 02, 2008 5:33:50 PM	A78D014ED540401	Canada	406037071.9	49.8	

Index 8

15 Hex ID: A78D014ED540401
 Full Hex: FFFED053C680A76AA0200FE49D50
 Burst Mode: Self Test Mode (Short)
 Protocol: Serial EPIRB Automatic Protocol
 Country 316: Canada
 National use #: Not Used
 C/S Approval #: Not Used
 Mfr. Block #: 5
 Mfr. Sequence #: 949
 Mfr. Model #: 5
 Mfr. Prod. Run#: 1
 Auxiliary Radio: 121.5 MHz
 Emergency type: Unspecified
 Activation type: Auto

Connected to Radio



FBM200 DATA

FEATURES

Receive all Cospas-Sarsat Frequency channels	•	•
Decode all Cospas-Sarsat Protocols	•	•
Measure 406 MHz Frequency	0	•
Measure 406 MHz Receive Power		•
Adjustable Receiver Sensitivity	•	•
USB Interface	•	•
Ethernet Interface		•
GPS Receiver		•
GPS Antenna		•
Outdoor High Performance 406 MHz Antenna	0	0
Audio and LED Alarms	•	•
Alarm Output – relay contacts	•	•

INCLUDED

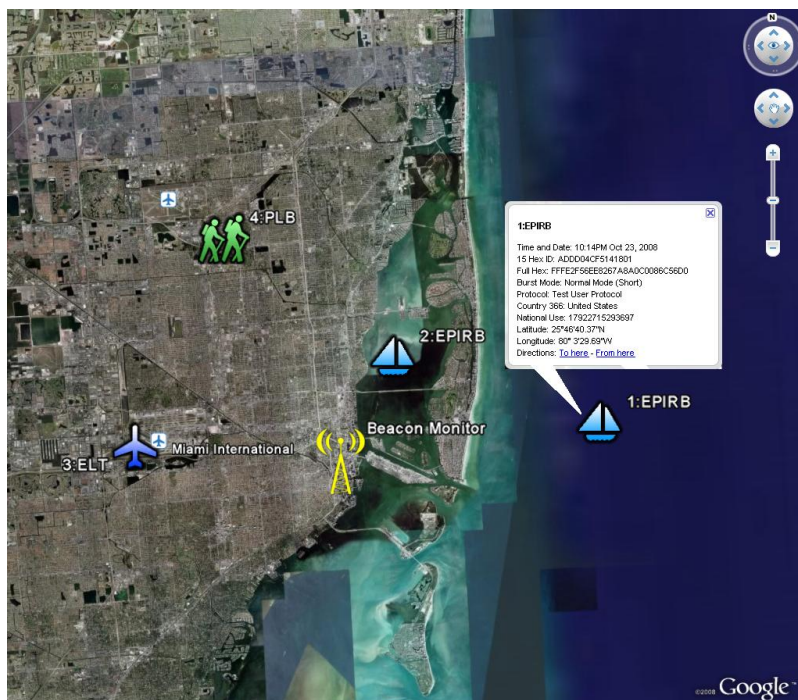
USB Cable – (2 m length)	•	•
AC to USB Adapter	•	•
Ethernet cable (2 m length)		•
Molded 406 MHz Monopole Antenna	•	•
Outdoor High Performance 406 MHz Antenna	0	0
GPS Active Antenna (5 m cable length)		•
Certificate of Calibration	0	•
Operator's Manual	•	•
User Interface Software	•	•

SPECIFICATIONS

406 MHz Receiver Sensitivity (<1% Error Rate)	-125 dBm
Out of Band Rejection (<400 MHz, >413 MHz)	>100 dB
406 MHz Input Frequency	406.0 – 406.1 MHz
406 MHz RF Input VSWR	1.20:1
406 Input Impedance	50Ω
406 Input Connector	SMA-female RP
GPS Antenna Port bias	+3.3V @ 40 mA max
GPS Antenna Port connector	SMA-female
Receiver power requirements (from USB port)	+5V @ <500 mA
Operating Temperature Range	-40°C to +85°C
Storage Temperature Range	-55°C to +85°C
Dimensions:	104 x 63 x 26 mm 4.1 x 2.5 x 1.0 inches
Weight:	0.230 kg 0.5 lbs

A Google Earth™ Interface!

The software automatically maps the location of the decoded GNSS location data directly into Google Earth™. It displays unique icons for ELTs, EPIRBs, and PLBs, decode information, RSSI, and timestamp of the beacon. Allows use of the rich graphical and overlay features of Google Earth™.



WS Technologies Inc. is an
ISO 9001 Certified company



PRELIMINARY

SPECIFICATIONS SUBJECT TO CHANGE WITHOUT NOTICE